

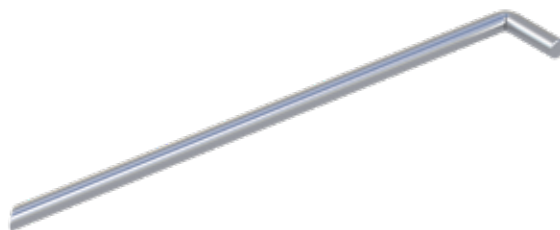
# Mobile Fencing & Security

## Soilpin for brace

### Specifications

Dimensions Height (mm)	600
Dimensions Width (mm)	85
Dimensions Depth (mm)	
Package quantity	10
Weight (Kg)	1.54

Disclaimer: There are no rights to be derived from the technical specification. You should always consider up to 10% tolerance deviations. Heras herewith complies with NEN-EN 10305-3 © Heras.



## A solid soilpin for anchoring braces and stabilising your fence line

### Extra stability for high wind conditions

The Soilpin provides robust anchoring for fence braces on construction sites or events. With a diameter of 20 mm and a length of 600 mm, this solid steel pin is driven into the ground to create a firm base for the angled support brace. Especially when used with banners or tarpaulins, the brace-soilpin combination significantly increases wind resistance and overall stability of your temporary fencing.

- 600 mm long, 20 mm thick galvanised steel pin
- Quick and easy to install
- Compatible with all standard Heras braces

### Prevent fences from tipping or shifting

Temporary fencing becomes vulnerable when exposed to wind, especially with mesh or cloth attached. Installing a brace with Soilpin on every third fence panel helps prevent tipping and shifting. The pin prevents the brace from sliding or lifting, even in extreme conditions. For maximum effectiveness, combine the Soilpin with Heras braces and secure clamps for a reliable, semi-permanent setup that keeps your site safe and secure.